

# Operating Instructions

## Media Control PFY-CTR0108

**AV Control with 8 freely configurable selection buttons and switchable relay**

Control of up to three end devices via RS232



Pilotfly GmbH ■ Wendelsteinstr.12 ■ 86163 Augsburg ■ Germany

# Impressum

Version IM\_Rev-001\_20260607-EN\_PFY-CTR0108

English, 1st. Edition, 06.2026



© Pilotfly

©PFY

## Copyright

This document is protected by copyright. All rights, including those of complete or partial photomechanical reproduction, duplication and distribution, as well as content and technical modifications, are reserved as part of continuous product improvements.

## **Liebe Kundin, lieber Kunde,**

Thank you for your trust and we hope you enjoy and achieve success with your new Pilotfly product.

You have chosen a high-quality product. The PFY-CTR0108 controller is a powerful and efficient device that enables reliable control of AV devices via RS232.

Even if you are familiar with electronic devices, please read these operating instructions carefully, as they are part of this product. They contain important information regarding safety, use, and disposal..

### **IMPORTANT**

**KEEP THESE INSTRUCTIONS FOR FUTURE REFERENCE AND PASS THEM ON TO THIRD PARTIES TOGETHER WITH THE DEVICE.**

Should you nevertheless experience problems with your product, please direct your inquiry to [info@pilotfly.de](mailto:info@pilotfly.de). We will be happy to assist you promptly and provide information on the next steps.

#### **Service address**

Pilotfly GmbH  
Wendelsteinstr. 12  
86163 Augsburg  
Deutschland

#### **Trademark Notice**

© HDBaseT Alliance. All rights reserved. HDBT® is a registered trademark of the HDBaseT Alliance.

© Microsoft Corporation. All rights reserved. Microsoft and Windows are registered trademarks of Microsoft Corporation in the United States and/or other countries.

© Apple Computer Inc. All rights reserved. Macintosh and Mac OS are registered trademarks of Apple Computer Inc. in the United States and/or other countries.

© Linus Torvalds. All rights reserved. Linux is a registered trademark of Linus Torvalds.

All other products and brand names mentioned in this manual or in other documentation for your Pilotfly product are trademarks or registered trademarks of their respective owners.

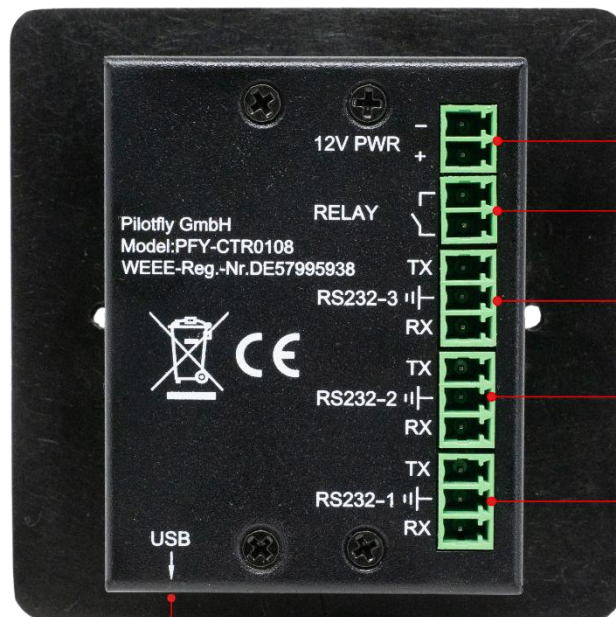
# Product Overview

## Components



Control buttons with LED

Fixation holes M4



Power input 12V / 1A

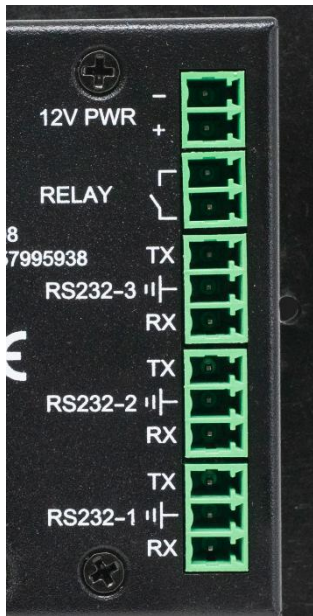
Programmable Relay  
max. Switchvoltage 24V

Configurable RS232 ports

USB Port for Software

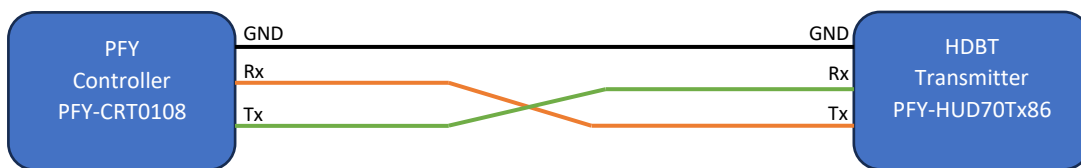
# Product Overview

## Rear Connections



12V PWR	+	Port for power 12Vdc /1A max
	-	Ground Port (minus)
RELAY		Programmable Relay. Max. switching voltage 24V 3 individual RS232 Ports.
RS232 Port 1-3		RX – Data reception GND- Ground TX – Data transmission  Ensure that TX and RX are connected correctly. Use a double-shielded cable for communication. Maximum cable length to end device: 40m.

### Connecting Diagram of RS232:



# Product Overview

---

## Technical Specifications

RS232	
Serial Port	Serial RS232 port on rear side with 3-pin Phoenix connector
Pin configuration	1 = Tx, 2 = Rx, 3 = Gnd
Baud rate and protocol	115200 baud rate, 8 data bits, 1 stop bit, no parity
Power Supply	
External power adapter	Input: 100-240Vac , 50-60Hz Output: 12Vdc, 1,0A
Power consumption	Max. 12Watt
Temperature / Humidity	Storage: -40 to +158 °F (-40 to +70 °C) / 10% bis 70%, In use: +32 to +122 °F (0 to +50 °C) / 10% bis 70%
Dimensions	
L x B x H	86 x 86 x 50mm
Weight	260g
Mounting holes	60mm / M4

# Table of contents

---

1.	Wichtige Sicherheitshinweise .....	<b>Fehler! Textmarke nicht definiert.</b>
1.1	Bedeutung der in dieser Anleitung verwendeten Symbole.....	<b>Fehler! Textmarke nicht definiert.</b>
1.2	Bestimmungsgemäße Verwendung .....	<b>Fehler! Textmarke nicht definiert.</b>
1.3	Mögliche Gefahren für bestimmte Personengruppen.....	<b>Fehler! Textmarke nicht definiert.</b>
1.4	Das Recht am eigenen Bild .....	<b>Fehler! Textmarke nicht definiert.</b>
1.5	Einsatz an bestimmten Orten und Umgebungsbedingungen.....	<b>Fehler! Textmarke nicht definiert.</b>
1.6	Stromversorgung und Betriebsbedingungen .....	<b>Fehler! Textmarke nicht definiert.</b>
1.7	Sichere Entsorgung .....	12
2.	Einrichten und Bedienen .....	<b>Fehler! Textmarke nicht definiert.</b>
2.1	Auspacken.....	<b>Fehler! Textmarke nicht definiert.</b>
2.2	Lieferumfang .....	13
2.3	Anschließen .....	<b>Fehler! Textmarke nicht definiert.</b>
2.4	Software.....	15
3.	Service .....	19
4.	EG Konformitätserklärung.....	<b>Fehler! Textmarke nicht definiert.</b>

# 1. Important Safety Instructions

---

Please read these safety instructions carefully before using your Pilotfly product to avoid damage to the product and prevent potential injuries. Keep these safety instructions readily available for anyone who will be using this product.

## 1.1 Meaning of the symbols used in these instructions

Warnings are presented in the following chapters in the context where a hazard may arise. They are specially marked in the subsequent chapters. The general safety instructions in this Chapter 1 are not highlighted separately.



### **Danger**

A hazard with a high level of risk which, if not avoided, could result in death or serious injury.



### **Warning**

A hazard with a medium level of risk which, if not avoided, could result in death or serious injury.



### **Caution**

Hazard with low risk that may result in minor or moderate injury.



### **Notice**

Risk of property or environmental damage.



### **Note**

Highlights useful tips and information.

# Important Safety Instructions

---

## 1.2 Intended Use

This product is intended exclusively for private AV transmission use. It is not designed for commercial or industrial application. The supplied power adapter is intended solely for use with the Pilotfly product; any other use is considered improper. Proper use requires adherence to the instructions provided in this manual. The manufacturer accepts no liability for damage resulting from improper use or unauthorized modifications. Use only the accessories specified by the manufacturer.

Please observe the local regulations and laws of the country where you use the Pilotfly product.

## 1.3 Possible dangers for certain groups of people

This appliance is not intended for use by children or by persons with limited physical, sensory, or mental capabilities, or a lack of experience and/or knowledge. Children and persons with such limitations may not always correctly recognize potential hazards. Therefore, ensure that...

- Children aged 14 and older and persons with limitations use the appliance **ONLY** if supervised by you or a person responsible for their safety, or if they have received appropriate instruction—but **NEVER** unsupervised.
- Children do not play with the appliance, nor clean or open it without supervision.
- You keep packaging film out of reach; there is a risk of suffocation.
- You consider potential hazards to children—such as strangulation—when routing cables.

## 1.4 The right to one's own image

Please observe copyright restrictions regarding the video recording of individuals—particularly at public events such as exhibitions, theatrical performances, festivities, and the like—even if the recordings are intended solely for personal use. Parental consent must be obtained prior to recording, especially in the case of minors. Comply with the legal regulations of the country where the equipment is used to avoid legal consequences.

# Important Safety Instructions

---

## 1.5 Use in specific locations and environmental conditions

To ensure the safe use of your Pilotfly product, please observe the following:

- Use it only in locations suitable for your display devices. Be sure to follow the relevant instructions in the manuals for the display devices used in conjunction with the transmitter.
- Operate it only within the permissible operating temperature range. Details regarding this can be found in the technical specifications.
- Do not expose it to extreme temperature fluctuations. Humidity can condense and lead to electrical short circuits.
- Do not expose it to direct heat sources, such as heaters or direct sunlight. Doing so may cause overheating and irreparable damage.
- Avoid contact with corrosive liquids.
- Avoid contact with splashing or dripping water.
- Never submerge it in water or other liquids.

# Important Safety Instructions

---

## 1.6 Power supply and operating conditions

To ensure the safe use of your Pilotfly product, please observe the following:

- Before connecting to the power supply, ensure that the voltage specified on the rating plate matches the voltage of your power outlet.
- Never handle the power adapter with wet hands. When unplugging the adapter from the outlet, always pull on the adapter itself. Never pull on the cable, as this could damage it. Likewise, never carry the device by the cable.
- Do not modify, kink, or pinch the cable; do not place heavy objects on it, run over it, or allow it to come into contact with heat sources or sharp edges. Also, ensure it does not create a tripping hazard.
- Regularly inspect the device, accessories, and cables for damage. If you discover any damage, do not continue using the affected components. Send the unit to Pilotfly Service for any necessary repairs.
- If you notice smoke, unusual noises, or strange odors, switch off the device immediately. Do not continue using the device until it has been inspected by a professional. Send it to Pilotfly Service.
- Never attempt to open the device or its accessories yourself; doing so could be dangerous.
- Switch off the device and unplug it from the outlet before cleaning or performing maintenance.
- Always unplug the power adapter during a thunderstorm. Devices connected to the power grid can be damaged during storms.
- Do not touch the device during a thunderstorm. Touching metal parts during a storm can result in electric shock.
- Use the power adapter only indoors and in a dry environment.
- Do not cover the power adapter; covering it could lead to damage caused by excessive heat buildup. The socket for connecting the plug-in power supply unit is located near the device and is easily accessible, so that the device can be quickly disconnected from the mains in the event of a fault.

# Important Safety Instructions

## 1.7 Sichere Entsorgung



Health and environmental hazards posed by batteries and rechargeable batteries! This symbol on batteries or rechargeable batteries indicates that they must not be disposed of as household waste. You are legally required to return used batteries to ensure proper disposal. You can hand in used batteries at a municipal collection point or at local retail outlets. As a distributor of batteries, we are also required to take back used batteries; however, our take-back obligation is limited to used batteries of the type that we stock—or have previously stocked—as new batteries in our product range. You may therefore either send used batteries of this type back to us with sufficient postage or drop them off free of charge directly at our dispatch warehouse at the following address:

Pilotfly GmbH  
Wendelsteinstr. 12  
86163 Augsburg  
Deutschland

Batteries are marked with the symbol of a crossed-out wheeled bin (see below). This symbol indicates that batteries must not be disposed of with household waste. For batteries containing more than 0.0005% mercury, more than 0.002% cadmium, or more than 0.004% lead by mass, the chemical symbol for the specific hazardous substance appears below the wheeled bin symbol—where "Cd" stands for cadmium, "Pb" for lead, and "Hg" for mercury.

Please ensure that the batteries to be disposed of are discharged and that the terminals are protected against short circuits, for example by taping over the individual terminals.



Environmental damage due to improper disposal!  
This symbol indicates that you must not dispose of the device with household waste under any circumstances. Under the Electrical and Electronic Equipment Act, owners of used equipment are legally required to send old electrical and electronic devices to a separate waste collection facility. Please use local collection points to return used devices and batteries.



Dispose of the packaging materials in an environmentally friendly manner in accordance with local regulations.

## 2. Setup and Operation

---

### 2.1 Unpacking



#### **Danger**

**Danger to life!** Keep packaging films away from children. There is a risk of suffocation.



#### **Coution**

**Environmental impact!** Always ship the device in its original packaging to prevent damage. Keep the packaging for this purpose. Dispose of any packaging materials that are no longer needed in an environmentally friendly manner, in accordance with local regulations.

1. Open the outer carton very carefully to avoid potentially damaging the product. This can happen if a knife with a long blade is used to open it.
2. Your Pilotfly product is inside a box. Unpack it along with all accessories.
3. Please check that the package contents are complete and undamaged.
4. Contact Pilotfly Service immediately if any parts are missing or defective.

### 2.2 Package Contents

1. Package Contents
  - a. 1 x AV-Control
  - b. 1 x External Power Supply
  - c. Phoenix connector for RS232 port

## 2.3 Connection



### Danger

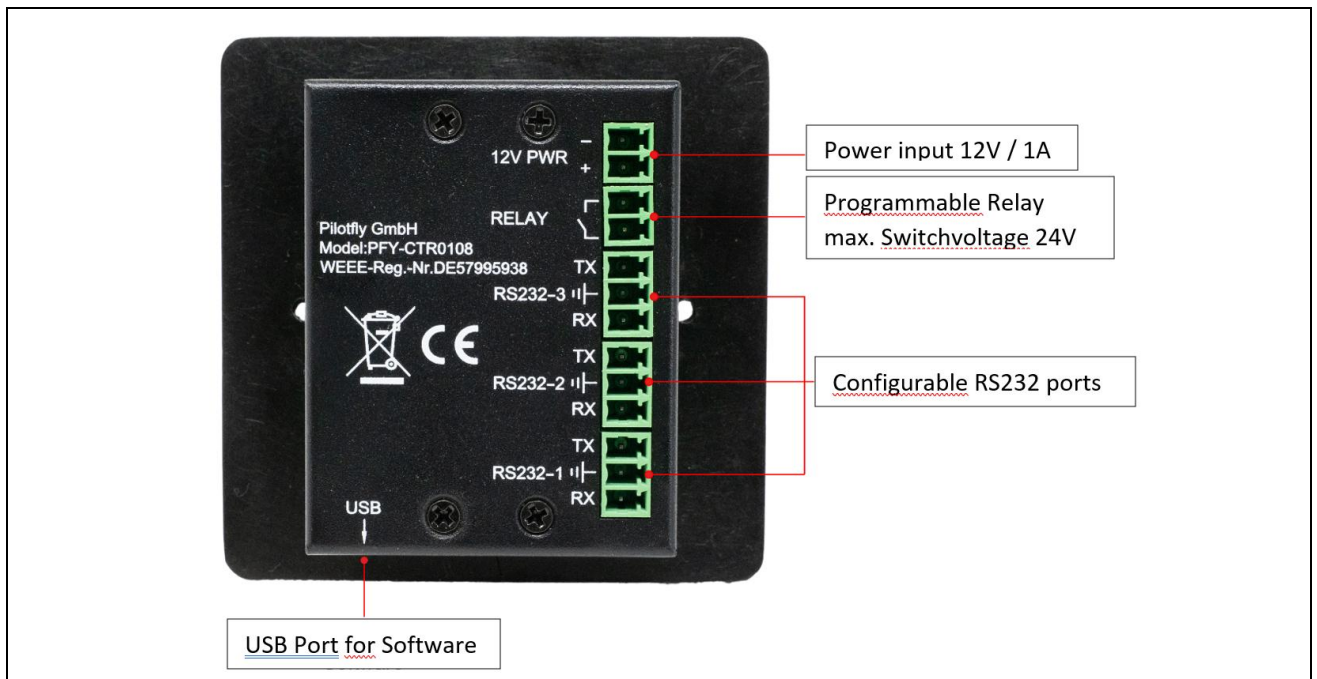
**Device failure!** Ensure correct polarity when connecting the power supply! Incorrect polarity can cause the device to fail.



### Caution

**Risk of malfunction!** When installing the unit flush-mounted, pay attention to cable routing and bending radii. Ensure that no cables are under tension or pinched. This could lead to image interference or, in the event of a short circuit, damage to the device.

1. Use an ISTDY cable for RS232 control. Ensure the correct pin assignment (Rx / GND / Tx) is used. Refer to page 5, "Wiring Diagram."
2. The illustration below describes the individual connection terminals.



3. Connect the power supply to the 12V PWR (DC) port. Ensure correct polarity!
4. For flush-mount installations, pay attention to cable routing and bending radii.
5. Connect the other end of the ISTY cable to the device to be controlled (e.g., PFY-HHUD70Tx86).
6. Once the wiring is correctly completed, you can use the device and perform programming via the Mini-USB port on the underside of the unit. The AV-Control unit must be connected to a 12V power supply for programming.

## 2.4 Software

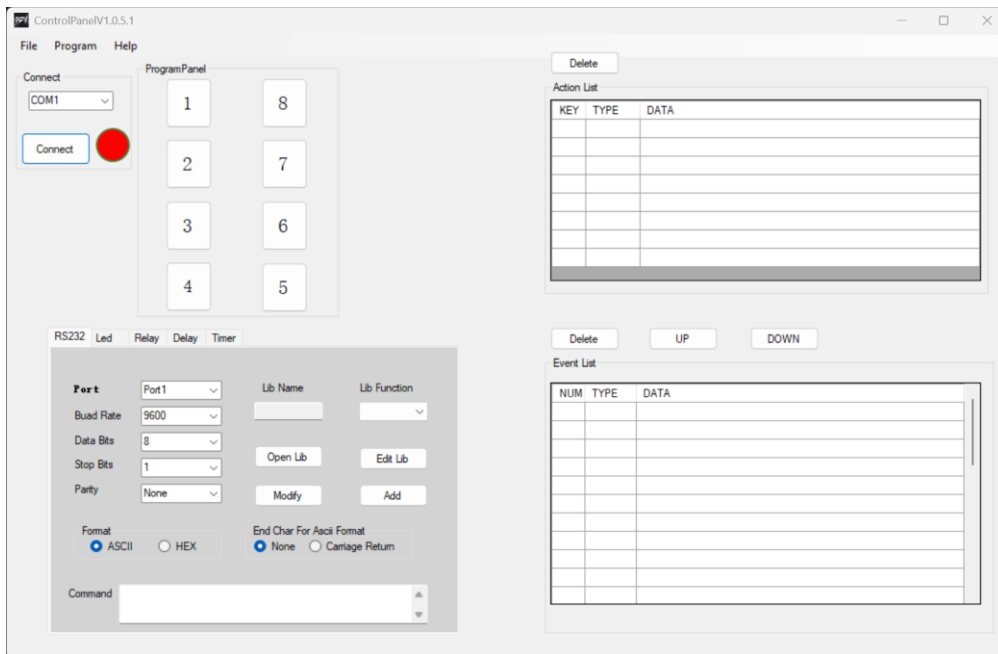


**Danger**

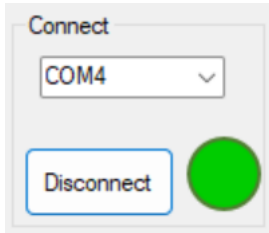
**Caution**

The "Update" tab is intended solely for service personnel. Incorrectly installed firmware can cause the device to malfunction or fail.

1. The PFY-CTR0108 is programmed via USB-Mini using the software.
2. Download the software from our website or use the QR code provided in the "Service" section.
3. After installation, you will see the user interface, which features several tabs. These are explained step-by-step below:



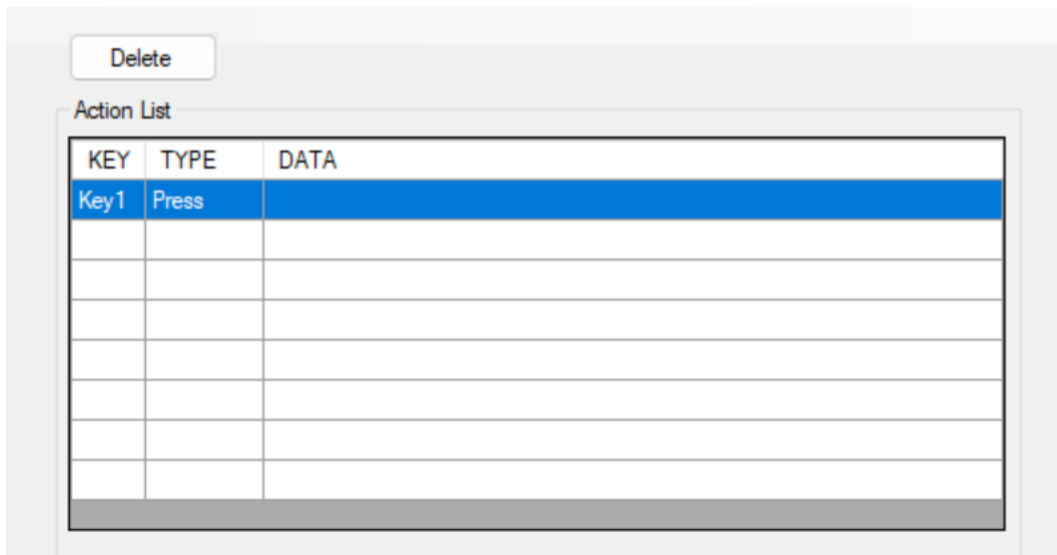
4. Connect the media controller to the PC using a mini-USB cable.
5. Select the COM port from the drop-down menu and click "Connect". Once the connection is established, the indicator circle changes from red to green.



6. You now have the option to program the individual buttons—numbered 1 through 8—in the "RS232" tab.
7. To program a button, proceed as follows:
  - a. Select the button to be programmed in the Program Panel. A dialog window appears; confirm it by clicking "Add".
  - b. The selected key then appears in the "Action List" field on the right.



Please note that you must select the respective button here in order to program it.





- e. Timer – In the timer field, you can specify a preset time at which the respective commands are to be executed. To start the timer function, the device must be briefly disconnected from the power supply; once input voltage is reapplied, any button must be pressed to start the trigger timer.



The trigger point remains active as long as the device is connected to the power source. In the event of a power failure, you must press the button again at the desired time to start the trigger timer.

Activate	Port	Parameter	Command
<input checked="" type="checkbox"/>	1	Set	
<input checked="" type="checkbox"/>	2	Set	
<input checked="" type="checkbox"/>	3	Set	
<input checked="" type="checkbox"/>	Relay	OFF <input type="checkbox"/>	
<input checked="" type="checkbox"/>	LED	Set	
	Hour	Min	
Timer	0 <input type="checkbox"/>	0 <input type="checkbox"/>	

9. Once you have programmed all the keys, it is recommended to save the program via the "File" menu (located at the top left of the software menu bar).
10. To transfer the program to the media controller, select "Upload" from the Program menu.
11. To make changes to the programming, you can use the "Download" option in the Program menu to download the program currently on the media controller to the software's user interface.

## 3. Service

---

Should you nevertheless experience problems with your device, please direct your inquiry to [support@pilotfly.de](mailto:support@pilotfly.de). We will assist you promptly and provide information on the next steps..

### Service address:

Pilotfly GmbH  
Wendelsteinstr.12  
86163 Augsburg  
Deutschland

### Further useful information:

You can obtain the latest version of the manual and the software in PDF format from the support section of the Pilotfly GmbH website at [www.pfy-tech.com](http://www.pfy-tech.com) or [www.pilotfly.de](http://www.pilotfly.de). Use the QR code below to access the latest software for the AV-Control media controller:



Software Tool

## 4. EC Declaration of Conformity

---

Pilotfly GmbH hereby declares that the specified device and its accessories comply with the relevant European Union harmonisation legislation: The full text of the EU declaration of conformity is available at the following internet address.: [www.pilotfly.de](http://www.pilotfly.de)